

# Chamonix, Manhattan & Santorini

A Fabric Collection by Yarwood Leather

Hospitality

Marine

Residential

Workspace

# YARWOOD

---

## Fabrics



# Yarwood Fabrics Collection

Wherever there is seating, Yarwood aims to provide high quality leather, faux leather and fabrics to enhance any design.

Yarwood thrives on its family atmosphere and dedicated service from our team who work alongside our customers to provide new solutions and techniques for incorporating leather, faux leathers and accompanying fabrics into designs.

Alongside supplying a wide range of leathers, faux leathers and fabrics for seating, Yarwood offers on-site services from cost saving leather and fabric cutting and sewing to embroidery and debossing to add detail to seating projects.

All Yarwood Fabrics products are provided to meet Crib 5 and IMO Part 8 fire regulations as standard.

You can order fabric in several ways:

By phone: **+44 (0) 113 252 1014**

By email: **[sales@yarwoodleather.com](mailto:sales@yarwoodleather.com)**

Minimum Order Quantity - **ten** linear metre

Fabric items are subject to a lead time dependent on order requirements.

Please get in touch with our team for details.

**YARWOOD**  
Fabrics





# Chamonix

Create a home away from home with Chamonix.

No matter the design, bring the feeling of warmth and comfort with this plain weaved fabric.

Chamonix is available in classic and commercial tones ready to create relaxing seating for the bar, hotel or restaurant.

Pair with natural and distressed looking leathers for warm looking and truly unique seating.

All our fabric ranges are provided to meet Crib 5 fire regulations as standard.

Key Facts		Chamonix
Roll width	140cm / 55 inches	
Composition	100% Polyester	
Fabric Repeat	Plain	
Flammability	Crib 5 (BS 7176) IMO FTP CODE 2010:PART 8	
Abrasion	Martindale - 50,000+	
Tear Strength	Warp 67N / Weft 32N	
Rub Fastness	4-5 Wet / 4-5 Dry	
Light Fastness	5	
Cleaning		
Please get in touch for our fabric clean and care guides		



Chamonix - Mist	Chamonix - Calico	Chamonix - Grey	Chamonix - Anthracite	Chamonix - Regency Grey	Chamonix - French Grey	Chamonix - Royal Blue	Chamonix - Wedgwood	Chamonix - Navy	Chamonix - Delft Blue
F CHAM03	F CHAM04	F CHAM12	F CHAM20	F CHAM10	F CHAM09	F CHAM26	F CHAM15	F CHAM27	F CHAM25
Chamonix - Duck Egg	Chamonix - Cocoa	Chamonix - Straw	Chamonix - Mocha	Chamonix - Wheat	Chamonix - Coffee	Chamonix - Mustard	Chamonix - Tangerine	Chamonix - Pistachio	
F CHAM07	F CHAM19	F CHAM16	F CHAM17	F CHAM18	F CHAM21	F CHAM14	F CHAM22	F CHAM13	
Chamonix - Parchment	Chamonix - Buttermilk	Chamonix - Ivory	Chamonix - Smoke	Chamonix - Wicker	Chamonix - Plum	Chamonix - Blossom	Chamonix - Ruby		
F CHAM05	F CHAM02	F CHAM01	F CHAM11	F CHAM06	F CHAM24	F CHAM08	F CHAM23		



# Manhattan

Bring the glamour of bright city lights to seating with the Manhattan velvet.

Offering an extensive colour palette of sophisticated neutrals and rich tones, bring a simple touch of luxury to workplace, hotel or leisure seating.

This elegant feel doesn't compromise on quality, with a durable finish to create relaxed yet practical furniture.

Pair with soft, smooth leathers for a chic feel or distressed leathers for seating filled with texture.

All our fabric ranges are provided to meet Crib 5 fire regulations as standard.

Key Facts		Manhattan
Roll width	138cm / 54 inches	
Composition	100% Polyester	
Fabric Repeat	Plain	
Flammability	Crib 5 (BS 7176) IMO FTP CODE 2010:PART 8	
Abrasion	Martindale - 100,000	
Tear Strength	Warp 87N / Weft 132N	
Rub Fastness	4-5 Wet / 4-5 Dry	
Light Fastness	5	
Cleaning		
Please get in touch for our fabric clean and care guides		

Manhattan - Mineral	Manhattan - Cloud	Manhattan - Silver	Manhattan - Space Grey	Manhattan - French Grey	Manhattan - Whisper	Manhattan - Iron	Manhattan - Smoke	Manhattan - Steel	Manhattan - Graphite
F MAN31	F MAN15	F MAN17	F MAN18	F MAN21	F MAN19	F MAN24	F MAN20	F MAN25	F MAN23
Manhattan - Ash	Manhattan - Marine	Manhattan - Slate	Manhattan - Anthracite	Manhattan - Sapphire	Manhattan - Navy	Manhattan - Teal	Manhattan - Highland	Manhattan - Jade	Manhattan - Forest
F MAN 27	F MAN33	F MAN32	F MAN26	F MAN35	F MAN34	F MAN04	F MAN40	F MAN41	F MAN38
Manhattan - Parchment	Manhattan - Camel	Manhattan - Sable	Manhattan - Honey	Manhattan - Ochre	Manhattan - Coffee	Manhattan - Cocoa	Manhattan - Praline	Manhattan - Pewter	Manhattan - Emerald
F MAN06	F MAN08	F MAN13	F MAN36	F MAN37	F MAN29	F MAN30	F MAN28	F MAN22	F MAN39
Manhattan - Stone	Manhattan - Sandstone	Manhattan - Natural	Manhattan - Rust	Manhattan - Paprika	Manhattan - Hessian	Manhattan - Sand	Manhattan - Calico	Manhattan - Wicker	Manhattan - Pecan
F MAN14	F MAN16	F MAN01	F MAN02	F MAN48	F MAN05	F MAN07	F MAN09	F MAN10	F MAN11
Manhattan - Mink	Manhattan - Rose	Manhattan - Heather	Manhattan - Violet	Manhattan - Mulberry	Manhattan - Coral	Manhattan - Ruby	Manhattan - Aubergine	Manhattan - Garnet	
F MAN12	F MAN42	F MAN43	F MAN47	F MAN44	F MAN49	F MAN50	F MAN46	F MAN45	



# Santorini

Transform a space with the fresh, calming tones of Santorini.

Whether you’re enjoying a cocktail by the ocean or in the comfort of a boutique hotel, this range offers a mix of timeless tones and modern brights to create seating to relax and escape into.

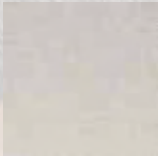
The plain weaved fabric contrasts perfectly with two-tone leathers bringing out different tones in the fabric.

All our fabric ranges are provided to meet Crib 5 fire regulations as standard.

Key Facts	Santorini
Roll width	138cm / 54 inches
Composition	43% Linen 29% Cotton 19% Viscose 9% Polyester
Fabric Repeat	Plain
Flammability	Crib 5 (BS 7176) IMO FTP CODE 2010:PART 8
Abrasion	Martindale - 45,000
Tear Strength	Warp 56N / Weft 42N
Rub Fastness	4-5 Wet / 4-5 Dry
Light Fastness	5
Cleaning	Please get in touch for our fabric clean and care guides



Santorini - Cloud



F SAN22

Santorini - Steel



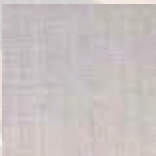
F SAN14

Santorini - Grey



F SAN15

Santorini - Regency



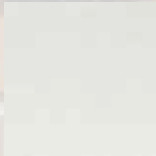
F SAN26

Santorini - Slate



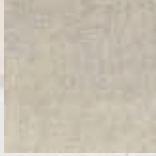
F SAN38

Santorini - Mineral



F SAN02

Santorini - Khaki



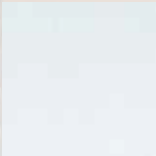
F SAN13

Santorini - Denim



F SAN29

Santorini - Wedgwood



F SAN19

Santorini - Navy



F SAN03

Santorini - Duck Egg



F SAN18

Santorini - Atmosphere



F SAN16

Santorini - Jade



F SAN17

Santorini - Pewter



F SAN37

Santorini - Gallant Grey



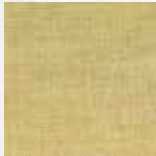
F SAN27

Santorini - Wheatgrass



F SAN31

Santorini - Kiwi



F SAN41

Santorini - Sunshine



F SAN39

Santorini - Ash



F SAN28

Santorini - Straw



F SAN06

Santorini - Smoke



F SAN23

Santorini - Beige



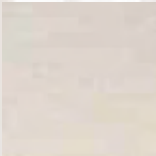
F SAN08

Santorini - Praline



F SAN30

Santorini - Mocha



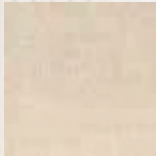
F SAN12

Santorini - Stone



F SAN10

Santorini - Camel



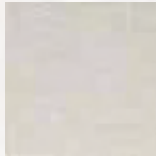
F SAN07

Santorini - Latte



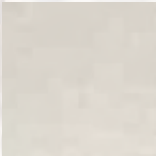
F SAN11

Santorini - Chrome



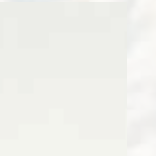
F SAN25

Santorini - Mist



F SAN20

Santorini - Silver



F SAN21

Santorini - Hessian



F SAN09

Santorini - Rust



F SAN40

Santorini - Pillarbox



F SAN43

Santorini - Raspberry



F SAN42

Santorini - Blush



F SAN32

Santorini - Lavender



F SAN36

Santorini - Heather



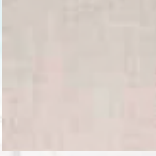
F SAN33

Santorini - Aubergine



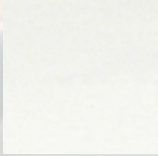
F SAN35

Santorini - Cappuccino



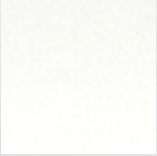
F SAN24

Santorini - Snow



F SAN01

Santorini - Ice



F SAN04



## FLAMMABILITY TEST REPORT

**Report No.:** LEI21110735A      **Date Received:** 08/11/21      **Date Tested:** 12/11/21      **Date Issued:** 12/11/21

**Company Name & Address:** YARWOOD LEATHER  
UNIT B  
TREEFIELD IND. EST.  
GILDERSOME  
LEEDS  
LS27 7JU

**Contact Name:** JOHN EDWARD

### Sample Details

Reference No.: Not stated  
Order No.: PR2069  
Style No.: Not stated  
Batch No.: Not stated  
Quality: CHAMONIX  
Colour: IVORY 01  
Supplier: Not stated  
Intended Use: UPH  
Quoted Fibre Composition: Not stated  
Retailer: Not stated  
Buying Division: Not stated  
Sample Description: Cream coloured woven fabric with grey coloured backing

Test Method	Pre Treatment	Requirement	Result
BS 5852: Part 1: 1979, Ignition source 0 (Cigarette)	None	Compliance with Schedule 4 Part 1 (The cigarette test) of The Furniture and Furnishings (fire) (safety) Regulations 1988 (as amended).	<b>Complies</b>
<b>Note:</b> Fabric was submitted for test rather than the upholstery composite so as suggested by The Guide to the Furniture Regulations the cover fabric was tested for cigarette resistance using standard polyurethane foam (non-modified) as this will give the furniture manufacturer a good indication of its likelihood to pass the cigarette test for the finished article			
BS 5852: Part 1: 1979, Ignition source 1 (Match)	None	Compliance with Schedule 5 Part 1 (The match test) of The Furniture and Furnishings (fire) (safety) Regulations 1988 (as amended).	<b>Complies</b>

.....  
**STEVEN OWEN**  
(Technical & Operational  
Excellence Manager)

  
.....  
**ANDREW HALLETT**  
(Flammability Team Leader)

.....  
**CAROLE SPOWART**  
(Flammability  
Administrator)

.....  
**GREGORY JAMES**  
(Flammability Technician)

## FLAMMABILITY TEST REPORT

### Test Specification

Test Method: BS 5852: Part 1: 1979 as modified by Schedule 4 Part 1 & Schedule 5 Part 1 of The Furniture and Furnishings (fire) (safety) Regulations 1988 (as amended).  
Ignition Source: Ignition source 0: Filterless cigarette  
Ignition source 1: Butane Gas flowing at 45ml/min @ 25°C.  
Flame Application Time: 20±1 seconds  
Side Tested: Face

### Uncertainty of Measurement

The uncertainty of measurement for Schedule 4 Part 1 source 0 has been estimated to be 0.03%  
The uncertainty of measurement for Schedule 5 Part 1 source 1 has been estimated to be 5.43%

### Filling Specification

Filling Type: Polyurethane foam  
Supplier / Grade: Carpenter / RP21130 unmodified  
Size: 450 X 300 X 75mm (back) & 450 X 150 X 75mm (seat)  
Density / Hardness: 20-22 kg/m<sup>3</sup> / Type B, 130N

### Pre-treatment / Durability Procedure

None

### Conditioning

Prior to Testing: At least 72 hours in ambient indoor conditions, then at least 16 hours in an atmosphere having a temperature of 20±5°C and a relative humidity of 50±20%  
At Time of Testing: Temperature between 15°C & 30°C. Relative humidity between 20% & 70%

### Test Results

*"The following test results relate only to the ignitability of the combinations of materials under the particular conditions of test; they are not intended as a means of assessing the full potential fire hazard of the materials in use."*

Ignition source 0 (Test 1):	The cigarette failed to burn its complete length, there was no flaming or progressive smouldering. <b>(Pass)</b>
Ignition source 0 (Test 2):	The cigarette failed to burn its complete length, there was no flaming or progressive smouldering. <b>(Pass)</b>
Ignition source 1 (Test 1):	Flaming ceased with the removal of the burner, there was no progressive smouldering. <b>(Pass)</b>
Ignition source 1 (Test 2):	Flaming ceased with the removal of the burner, there was no progressive smouldering. <b>(Pass)</b>

### Conclusions

The composite tested meets the requirements of Schedule 4 Part 1 (The cigarette test) of The Furniture and Furnishings (fire) (safety) Regulations 1988 (as amended). **PASS.**

The fabric tested meets the requirements of Schedule 5 Part 1 (The match test) of The Furniture and Furnishings (fire) (safety) Regulations 1988 (as amended). **PASS.**

## FLAMMABILITY TEST REPORT

The client acknowledges and agrees that any services provided and/or reports produced by Intertek are done so within the limits of the scope of work agreed pursuant to the client's specific instructions. This report relates specifically to the sample(s) tested that were drawn and delivered by the client or their nominated third party. Intertek does not make any representation or warranty for any bulk samples or certify the bulk samples received from the client. Furthermore, Intertek does not provide a warranty or verification on the sample(s) representing any specific goods, material and/or shipment and only relate to the sample(s) as received and tested. Intertek have aimed to conduct the review on a diligent and careful basis and we do not accept any liability to you for any loss arising out of or in connection with this report, in contract, tort, by statute or otherwise, except in the event of our gross negligence or wilful misconduct. In no event, will the contents of any reports or any extracts, excerpts or parts of any reports be distributed or published without the prior written consent of Intertek in each instance. Only the client is authorized to permit copying or distribution of this report (and then only in its entirety). Any such third parties to whom this report may be circulated rely on the content of the report solely at their own risk.

The reported expanded uncertainty is based on a standard uncertainty multiplied by a coverage factor of  $k = 2$ , providing a level of confidence of approximately 95 %. Unless otherwise specified all compliance and pass/fail statements are binary simple acceptance based on the tolerance interval and, with the exception of graded methods, a test uncertainty ratio greater (TUR) than 4:1. For graded methods the TUR will drop to as low as 0.5:1 when the tolerance limits are within a grade division of the upper scale limit. The Uncertainty budgets are stated for each Test method, these are for reference, and should be considered when results are on or close to Specification Limits / Requirements and in such cases it should be noted that the risk of false acceptance or rejection may be as high as 50%, for further information please refer to ILAC G8.



## FLAMMABILITY TEST REPORT

**Report No.:** LEI21110735B    **Date Received:** 08/11/21    **Date Tested:** 12/11/21    **Date Issued:** 12/11/21

**Company Name & Address:**  
YARWOOD LEATHER  
UNIT B  
TREEFIELD IND. EST.  
GILDERSOME  
LEEDS  
LS27 7JU

**Contact Name:** JOHN EDWARD

### Sample Details

Reference No.: Not stated  
Order No.: PR2069  
Style No.: Not stated  
Batch No.: Not stated  
Quality: CHAMONIX  
Colour: IVORY 01  
Supplier: Not stated  
Intended Use: UPH  
Quoted Fibre Composition: Not stated  
Retailer: Not stated  
Buying Division: Not stated  
Sample Description: Cream coloured woven fabric with grey coloured backing

Test Method	Pre Treatment	Requirement	Result
BS 5852:2006 Clause 11 (upholstery composite) Ignition source 5	None	As BS 5852:2006 Clause 11 (upholstery composite) Ignition source 5	NI/5 (PASS)

.....  
**STEVEN OWEN**  
(Technical & Operational  
Excellence Manager)

  
.....  
**ANDREW HALLETT**  
(Flammability Team Leader)

.....  
**CAROLE SPOWART**  
(Flammability  
Administrator)

.....  
**GREGORY JAMES**  
(Flammability Technician)



## FLAMMABILITY TEST REPORT

### Test Specification

Test Method: BS 5852:2006 Clause 11 (upholstery composite) Ignition source 5

### Uncertainty of Measurement

The uncertainty of measurement has been estimated to be 5.99%

### Foam specification

Supplier / Grade: Carpenter / RX36110  
Size: 450 x 450 x 75mm (back) & 450 x 300 x 75mm (seat)  
Density / Hardness: 36kg/m<sup>3</sup> ± 5% / 105N ± 15%

### Conditioning

Prior to Testing: At least 72 hours in ambient indoor conditions, then at least 24 hours in an atmosphere having a temperature of 23 ± 2°C and a relative humidity of 50 ± 5%

At Time of Testing: Temperature of 10 °C to 30 °C and a relative humidity of 15 % to 80 %

### Test Results

*"The following test results relate only to the ignitability of the combination of upholstery composites (BS 5852: 2006, Clause 11) under the particular conditions of test stated; they are not intended as a means of assessing the full potential fire hazard of the materials or products in use";*

Test number / position	1	2
<b>Criterion of Ignition</b>		
<b>Smouldering Criteria</b>		
Externally detectable amounts of smoke, heat or glowing 60 minutes after crib ignition	No	No
Escalating smouldering behaviour rendered the test unsafe to continue and required forcible extinction	No	No
Smouldering essentially consumed the test specimen within the duration of the test / Smouldering reached the extremities of the test specimen (Other than the top of the vertical part of the test specimen) within the duration of the test	No	No
<b>Flaming Failure</b>		
The test specimen continued to flame for more than 10 minutes after the ignition of the crib	No	No
Escalating combustion behaviour rendered the test unsafe to continue and required forcible extinction	No	No
Flaming essentially consumed the test specimen within the duration of the test	No	No
Flaming reached the extremities of the test specimen (Other than the top of the vertical part of the test specimen) within the duration of the test	No	No
Debris from the test specimen caused an isolated floor fire that continued to flame for more than 10 minutes after the ignition of the crib	No	No
<b>Final Examination</b>		
Progressive smouldering was observed when the sample was dismantled	No	No
Evidence of charring within the filling (other than discolouration) more than 100mm in any direction, apart from upwards, from the nearest part of the original position of the ignition source	No	No
Time to extinction of flames after crib ignition	3 Minutes 35 Seconds	3 Minutes 24 Seconds
Time to extinction of glowing after crib ignition	6 Minutes 13 Seconds	6 Minutes 20 Seconds
Time to extinction of smoke after crib ignition	Due to the amount of smoke in the test enclosure it was not possible to see when smoking ceased	Due to the amount of smoke in the test enclosure it was not possible to see when smoking ceased
Maximum extent of damage to back (mm) Length / Width	400 90	400 91
Maximum extent of damage to base (mm) Length / Width	62 84	63 87
<b>Test Result</b>	<b>NI/5 (PASS)</b>	<b>NI/5 (PASS)</b>
<b>Ignitability performance index: "Clause 11 - NI/5"</b>		



## FLAMMABILITY TEST REPORT

The client acknowledges and agrees that any services provided and/or reports produced by Intertek are done so within the limits of the scope of work agreed pursuant to the client's specific instructions. This report relates specifically to the sample(s) tested that were drawn and delivered by the client or their nominated third party. Intertek does not make any representation or warranty for any bulk samples or certify the bulk samples received from the client. Furthermore, Intertek does not provide a warranty or verification on the sample(s) representing any specific goods, material and/or shipment and only relate to the sample(s) as received and tested. Intertek have aimed to conduct the review on a diligent and careful basis and we do not accept any liability to you for any loss arising out of or in connection with this report, in contract, tort, by statute or otherwise, except in the event of our gross negligence or wilful misconduct. In no event, will the contents of any reports or any extracts, excerpts or parts of any reports be distributed or published without the prior written consent of Intertek in each instance. Only the client is authorized to permit copying or distribution of this report (and then only in its entirety). Any such third parties to whom this report may be circulated rely on the content of the report solely at their own risk.

The reported expanded uncertainty is based on a standard uncertainty multiplied by a coverage factor of  $k = 2$ , providing a level of confidence of approximately 95 %. Unless otherwise specified all compliance and pass/fail statements are binary simple acceptance based on the tolerance interval and, with the exception of graded methods, a test uncertainty ratio greater (TUR) than 4:1. For graded methods the TUR will drop to as low as 0.5:1 when the tolerance limits are within a grade division of the upper scale limit. The Uncertainty budgets are stated for each Test method, these are for reference, and should be considered when results are on or close to Specification Limits / Requirements and in such cases it should be noted that the risk of false acceptance or rejection may be as high as 50%, for further information please refer to ILAC G8.



## FLAMMABILITY TEST REPORT

**Report No.:** LEI21110735C    **Date Received:** 08/11/21    **Date Tested:** 12/11/21    **Date Issued:** 12/11/21

**Company Name & Address:** YARWOOD LEATHER  
UNIT B  
TREEFIELD IND. EST.  
GILDERSOME  
LEEDS  
LS27 7JU

**Contact Name:** JOHN EDWARD

### Sample Details

Reference No.:	Not stated
Order No.:	PR2069
Style No.:	Not stated
Batch No.:	Not stated
Quality:	CHAMONIX
Colour:	IVORY 01
Supplier:	Not stated
Intended Use:	UPH
Quoted Fibre Composition:	Not stated
Retailer:	Not stated
Buying Division:	Not stated
Sample Description:	Cream coloured woven fabric with grey coloured backing

Test Method	Pre Treatment	Flammability Performance Requirements	Result
IMO FTP Code (2010) – Annex 1, Part 8 (Smouldering cigarette test)	None	IMO FTP Code (2010) – Annex 1, Part 8	PASS
IMO FTP Code (2010) – Annex 1, Part 8 (Propane flame test)	None	IMO FTP Code (2010) – Annex 1, Part 8	PASS

.....  
**STEVEN OWEN**  
(Technical & Operational  
Excellence Manager)

.....  
  
**ANDREW HALLETT**  
(Flammability Team Leader)

.....  
**CAROLE SPOWART**  
(Flammability  
Administrator)

.....  
**GREGORY JAMES**  
(Flammability Technician)

## FLAMMABILITY TEST REPORT

### Additional Information (Annex)

Name and Address of the Sponsor: Not stated  
Name and Address of the  
Manufacturer/Supplier (If known): Not stated  
Type of Furniture: UPH  
Fabric Details – Weave/Density/Yarn  
count/thickness(mm)/mass(g/m<sup>2</sup>) Colour &  
Tone: Not stated  
Fire Retardant Treatment: No

### Test Specification

Test Method: IMO FTP Code (2010) – Annex 1, Part 8  
Ignition Source: Ignition source 0: Filterless cigarette  
Ignition source 1: Propane Gas (95% Purity) flowing at 6.38±0.25 g/hour @  
20°C.  
Flame Application Time: 20±1 seconds  
Side Tested: Face

### Uncertainty of Measurement

The uncertainty of measurement for ignition source 0 has been estimated to be 0.03%  
The uncertainty of measurement for ignition source 1 has been estimated to be 5.43%

### Cigarette Specification

Cigarette Type: Filterless cigarette  
Dimensions: Length: 70±4 mm  
Diameter: 8±0.5 mm  
Mass: 0.95±0.15 g  
Smouldering Rate: 11±4.0 min/50mm

### Filling Specification (As requested by the customer)

Filling Type: Polyurethane Foam  
Supplier / Grade: Carpenter / RP21130 Unmodified  
Size: 450 X 300 X 75mm (back) & 450 X 150 X 75mm (seat)  
Density / Hardness: 20-22 kg/m<sup>3</sup> / Type B, 130N

### Pre-treatment / Durability procedure

None. Tested as received

### Conditioning

Prior to Testing: At least 72 hours in ambient indoor conditions, then at least 16 hours in an  
atmosphere having a temperature of 23±2°C and a relative humidity of 50±5%  
At Time of Testing: Temperature between 15°C & 25°C. Relative humidity between 20% & 70%



## FLAMMABILITY TEST REPORT

### Test Results

*"The test results relate to the behaviour of the test specimens of a product under the particular conditions of the test; they are not intended to be the sole criterion for assessing the potential fire hazard of the product in use."*

Cigarette Test	Initial		Repeat	
Criterion of Ignition				
Smoulders More Than 1 Hour	No		No	
In Final Examination, Presence of Active Smouldering	No		No	
Occurrence Of Flames	No		No	
Comments				
Flaming Ceased	-		-	
Glowing Ceased	-		-	
Smoke Ceased	The cigarette failed to burn its complete length, there was no flaming or progressive smouldering		The cigarette failed to burn its complete length, there was no flaming or progressive smouldering	
Extent of Damage (Burning and/or Charring)				
Damage to Back (mm) Length / Width	-	-	-	-
Damage to Base (mm) Length / Width	-	-	-	-
Result	PASS		PASS	

Propane Flame Test	Initial		Repeat	
Criterion of Ignition				
Smoulders More Than 1 Hour	No		No	
In Final Examination, Presence of Active Smouldering	No		No	
Flames For Longer Than 120 Seconds	No		No	
Comments				
Flaming Ceased	0 Seconds		0 Seconds	
Glowing Ceased	-		-	
Smoke Ceased	13 Seconds		14 Seconds	
Extent of Damage (Burning and/or Charring)				
Damage to Back (mm) Length / Width	50	15	50	15
Damage to Base (mm) Length / Width	10	10	10	10
Result	PASS		PASS	

### Conclusions

When tested over RP21130 foam (as requested by the customer) the sample meets the flammability performance requirements of the smouldering cigarette test in FTP Code (2010) – Annex 1, Part 8. **PASS.**

When tested over RP21130 foam (as requested by the customer) the sample meets the flammability performance requirements of the propane flame test in FTP Code (2010) – Annex 1, Part 8. **PASS.**

## FLAMMABILITY TEST REPORT

The client acknowledges and agrees that any services provided and/or reports produced by Intertek are done so within the limits of the scope of work agreed pursuant to the client's specific instructions. This report relates specifically to the sample(s) tested that were drawn and delivered by the client or their nominated third party. Intertek does not make any representation or warranty for any bulk samples or certify the bulk samples received from the client. Furthermore, Intertek does not provide a warranty or verification on the sample(s) representing any specific goods, material and/or shipment and only relate to the sample(s) as received and tested. Intertek have aimed to conduct the review on a diligent and careful basis and we do not accept any liability to you for any loss arising out of or in connection with this report, in contract, tort, by statute or otherwise, except in the event of our gross negligence or wilful misconduct. In no event, will the contents of any reports or any extracts, excerpts or parts of any reports be distributed or published without the prior written consent of Intertek in each instance. Only the client is authorized to permit copying or distribution of this report (and then only in its entirety). Any such third parties to whom this report may be circulated rely on the content of the report solely at their own risk.

The reported expanded uncertainty is based on a standard uncertainty multiplied by a coverage factor of  $k = 2$ , providing a level of confidence of approximately 95 %. Unless otherwise specified all compliance and pass/fail statements are binary simple acceptance based on the tolerance interval and, with the exception of graded methods, a test uncertainty ratio greater (TUR) than 4:1. For graded methods the TUR will drop to as low as 0.5:1 when the tolerance limits are within a grade division of the upper scale limit. The Uncertainty budgets are stated for each Test method, these are for reference, and should be considered when results are on or close to Specification Limits / Requirements and in such cases it should be noted that the risk of false acceptance or rejection may be as high as 50%, for further information please refer to ILAC G8.



## FLAMMABILITY TEST REPORT

**Report No.:** LEI21110732A      **Date Received:** 08/11/21      **Date Tested:** 12/11/21      **Date Issued:** 12/11/21

**Company Name & Address:**  
YARWOOD LEATHER  
UNIT B  
TREEFIELD IND. EST.  
GILDERSOME  
LEEDS  
LS27 7JU

**Contact Name:** JOHN EDWARD

### Sample Details

Reference No.: Not stated  
Order No.: PR2069  
Style No.: Not stated  
Batch No.: Not stated  
Quality: MANHATTAN  
Colour: NATURAL 15424  
Supplier: Not stated  
Intended Use: UPH  
Quoted Fibre Composition: Not stated  
Retailer: Not stated  
Buying Division: Not stated  
Sample Description: White coloured woven fabric with pile and grey coloured backing

Test Method	Pre Treatment	Requirement	Result
BS 5852: Part 1: 1979, Ignition source 0 (Cigarette)	None	Compliance with Schedule 4 Part 1 (The cigarette test) of The Furniture and Furnishings (fire) (safety) Regulations 1988 (as amended).	<b>Complies</b>
<b>Note:</b> Fabric was submitted for test rather than the upholstery composite so as suggested by The Guide to the Furniture Regulations the cover fabric was tested for cigarette resistance using standard polyurethane foam (non-modified) as this will give the furniture manufacturer a good indication of its likelihood to pass the cigarette test for the finished article			
BS 5852: Part 1: 1979, Ignition source 1 (Match)	None	Compliance with Schedule 5 Part 1 (The match test) of The Furniture and Furnishings (fire) (safety) Regulations 1988 (as amended).	<b>Complies</b>

.....  
**STEVEN OWEN**  
(Technical & Operational  
Excellence Manager)

  
.....  
**ANDREW HALLETT**  
(Flammability Team Leader)

.....  
**CAROLE SPOWART**  
(Flammability  
Administrator)

.....  
**GREGORY JAMES**  
(Flammability Technician)

## FLAMMABILITY TEST REPORT

### Test Specification

Test Method: BS 5852: Part 1: 1979 as modified by Schedule 4 Part 1 & Schedule 5 Part 1 of The Furniture and Furnishings (fire) (safety) Regulations 1988 (as amended).  
Ignition Source: Ignition source 0: Filterless cigarette  
Ignition source 1: Butane Gas flowing at 45ml/min @ 25°C.  
Flame Application Time: 20±1 seconds  
Side Tested: Face

### Uncertainty of Measurement

The uncertainty of measurement for Schedule 4 Part 1 source 0 has been estimated to be 0.03%  
The uncertainty of measurement for Schedule 5 Part 1 source 1 has been estimated to be 5.43%

### Filling Specification

Filling Type: Polyurethane foam  
Supplier / Grade: Carpenter / RP21130 unmodified  
Size: 450 X 300 X 75mm (back) & 450 X 150 X 75mm (seat)  
Density / Hardness: 20-22 kg/m<sup>3</sup> / Type B, 130N

### Pre-treatment / Durability Procedure

None

### Conditioning

Prior to Testing: At least 72 hours in ambient indoor conditions, then at least 16 hours in an atmosphere having a temperature of 20±5°C and a relative humidity of 50±20%  
At Time of Testing: Temperature between 15°C & 30°C. Relative humidity between 20% & 70%

### Test Results

*"The following test results relate only to the ignitability of the combinations of materials under the particular conditions of test; they are not intended as a means of assessing the full potential fire hazard of the materials in use."*

Ignition source 0 (Test 1):	The cigarette burnt out within 26 minutes, there was no flaming or progressive smouldering. <b>(Pass)</b>
Ignition source 0 (Test 2):	The cigarette burnt out within 27 minutes, there was no flaming or progressive smouldering. <b>(Pass)</b>
Ignition source 1 (Test 1):	Flaming ceased with the removal of the burner, there was no progressive smouldering. <b>(Pass)</b>
Ignition source 1 (Test 2):	Flaming ceased with the removal of the burner, there was no progressive smouldering. <b>(Pass)</b>

### Conclusions

The composite tested meets the requirements of Schedule 4 Part 1 (The cigarette test) of The Furniture and Furnishings (fire) (safety) Regulations 1988 (as amended). **PASS.**

The fabric tested meets the requirements of Schedule 5 Part 1 (The match test) of The Furniture and Furnishings (fire) (safety) Regulations 1988 (as amended). **PASS.**



## FLAMMABILITY TEST REPORT

The client acknowledges and agrees that any services provided and/or reports produced by Intertek are done so within the limits of the scope of work agreed pursuant to the client's specific instructions. This report relates specifically to the sample(s) tested that were drawn and delivered by the client or their nominated third party. Intertek does not make any representation or warranty for any bulk samples or certify the bulk samples received from the client. Furthermore, Intertek does not provide a warranty or verification on the sample(s) representing any specific goods, material and/or shipment and only relate to the sample(s) as received and tested. Intertek have aimed to conduct the review on a diligent and careful basis and we do not accept any liability to you for any loss arising out of or in connection with this report, in contract, tort, by statute or otherwise, except in the event of our gross negligence or wilful misconduct. In no event, will the contents of any reports or any extracts, excerpts or parts of any reports be distributed or published without the prior written consent of Intertek in each instance. Only the client is authorized to permit copying or distribution of this report (and then only in its entirety). Any such third parties to whom this report may be circulated rely on the content of the report solely at their own risk.

The reported expanded uncertainty is based on a standard uncertainty multiplied by a coverage factor of  $k = 2$ , providing a level of confidence of approximately 95 %. Unless otherwise specified all compliance and pass/fail statements are binary simple acceptance based on the tolerance interval and, with the exception of graded methods, a test uncertainty ratio greater (TUR) than 4:1. For graded methods the TUR will drop to as low as 0.5:1 when the tolerance limits are within a grade division of the upper scale limit. The Uncertainty budgets are stated for each Test method, these are for reference, and should be considered when results are on or close to Specification Limits / Requirements and in such cases it should be noted that the risk of false acceptance or rejection may be as high as 50%, for further information please refer to ILAC G8.

## FLAMMABILITY TEST REPORT

**Report No.:** LEI21110732B    **Date Received:** 08/11/21    **Date Tested:** 12/11/21    **Date Issued:** 12/11/21

**Company Name & Address:**  
YARWOOD LEATHER  
UNIT B  
TREEFIELD IND. EST.  
GILDERSOME  
LEEDS  
LS27 7JU

**Contact Name:** JOHN EDWARD

### Sample Details

Reference No.:	Not stated
Order No.:	PR2069
Style No.:	Not stated
Batch No.:	Not stated
Quality:	MANHATTAN
Colour:	NATURAL 15424
Supplier:	Not stated
Intended Use:	Not stated
Quoted Fibre Composition:	Not stated
Retailer:	Not stated
Buying Division:	Not stated
Sample Description:	White coloured woven fabric with pile and grey coloured backing

Test Method	Pre Treatment	Requirement	Result
BS 5852:2006 Clause 11 (upholstery composite) Ignition source 5	None	As BS 5852:2006 Clause 11 (upholstery composite) Ignition source 5	NI/5 (PASS)

.....  
**STEVEN OWEN**  
(Technical & Operational  
Excellence Manager)

  
.....  
**ANDREW HALLETT**  
(Flammability Team Leader)

.....  
**CAROLE SPOWART**  
(Flammability  
Administrator)

.....  
**GREGORY JAMES**  
(Flammability Technician)



## FLAMMABILITY TEST REPORT

### Test Specification

Test Method: BS 5852:2006 Clause 11 (upholstery composite) Ignition source 5

### Uncertainty of Measurement

The uncertainty of measurement has been estimated to be 5.99%

### Foam specification

Supplier / Grade: Carpenter / RX36110  
Size: 450 x 450 x 75mm (back) & 450 x 300 x 75mm (seat)  
Density / Hardness: 36kg/m<sup>3</sup> ± 5% / 105N ± 15%

### Conditioning

Prior to Testing: At least 72 hours in ambient indoor conditions, then at least 24 hours in an atmosphere having a temperature of 23 ± 2°C and a relative humidity of 50 ± 5%

At Time of Testing: Temperature of 10 °C to 30 °C and a relative humidity of 15 % to 80 %

### Test Results

*"The following test results relate only to the ignitability of the combination of upholstery composites (BS 5852: 2006, Clause 11) under the particular conditions of test stated; they are not intended as a means of assessing the full potential fire hazard of the materials or products in use";*

Test number / position	1	2
<b>Criterion of Ignition</b>		
<b>Smouldering Criteria</b>		
Externally detectable amounts of smoke, heat or glowing 60 minutes after crib ignition	No	No
Escalating smouldering behaviour rendered the test unsafe to continue and required forcible extinction	No	No
Smouldering essentially consumed the test specimen within the duration of the test / Smouldering reached the extremities of the test specimen (Other than the top of the vertical part of the test specimen) within the duration of the test	No	No
<b>Flaming Failure</b>		
The test specimen continued to flame for more than 10 minutes after the ignition of the crib	No	No
Escalating combustion behaviour rendered the test unsafe to continue and required forcible extinction	No	No
Flaming essentially consumed the test specimen within the duration of the test	No	No
Flaming reached the extremities of the test specimen (Other than the top of the vertical part of the test specimen) within the duration of the test	No	No
Debris from the test specimen caused an isolated floor fire that continued to flame for more than 10 minutes after the ignition of the crib	No	No
<b>Final Examination</b>		
Progressive smouldering was observed when the sample was dismantled	No	No
Evidence of charring within the filling (other than discolouration) more than 100mm in any direction, apart from upwards, from the nearest part of the original position of the ignition source	No	No
Time to extinction of flames after crib ignition	6 Minutes 28 Seconds	6 Minutes 29 Seconds
Time to extinction of glowing after crib ignition	8 Minutes 14 Seconds	8 Minutes 24 Seconds
Time to extinction of smoke after crib ignition	Due to the amount of smoke in the test enclosure it was not possible to see when smoking ceased	Due to the amount of smoke in the test enclosure it was not possible to see when smoking ceased
Maximum extent of damage to back (mm) Length / Width	400 / 106	400 / 130
Maximum extent of damage to base (mm) Length / Width	75 / 116	65 / 130
<b>Test Result</b>	<b>NI/5 (PASS)</b>	<b>NI/5 (PASS)</b>
Ignitability performance index: "Clause 11 - NI/5"		

## FLAMMABILITY TEST REPORT

The client acknowledges and agrees that any services provided and/or reports produced by Intertek are done so within the limits of the scope of work agreed pursuant to the client's specific instructions. This report relates specifically to the sample(s) tested that were drawn and delivered by the client or their nominated third party. Intertek does not make any representation or warranty for any bulk samples or certify the bulk samples received from the client. Furthermore, Intertek does not provide a warranty or verification on the sample(s) representing any specific goods, material and/or shipment and only relate to the sample(s) as received and tested. Intertek have aimed to conduct the review on a diligent and careful basis and we do not accept any liability to you for any loss arising out of or in connection with this report, in contract, tort, by statute or otherwise, except in the event of our gross negligence or wilful misconduct. In no event, will the contents of any reports or any extracts, excerpts or parts of any reports be distributed or published without the prior written consent of Intertek in each instance. Only the client is authorized to permit copying or distribution of this report (and then only in its entirety). Any such third parties to whom this report may be circulated rely on the content of the report solely at their own risk.

The reported expanded uncertainty is based on a standard uncertainty multiplied by a coverage factor of  $k = 2$ , providing a level of confidence of approximately 95 %. Unless otherwise specified all compliance and pass/fail statements are binary simple acceptance based on the tolerance interval and, with the exception of graded methods, a test uncertainty ratio greater (TUR) than 4:1. For graded methods the TUR will drop to as low as 0.5:1 when the tolerance limits are within a grade division of the upper scale limit. The Uncertainty budgets are stated for each Test method, these are for reference, and should be considered when results are on or close to Specification Limits / Requirements and in such cases it should be noted that the risk of false acceptance or rejection may be as high as 50%, for further information please refer to ILAC G8.



## FLAMMABILITY TEST REPORT

**Report No.:** LEI21110732C    **Date Received:** 08/11/21    **Date Tested:** 12/11/21    **Date Issued:** 12/11/21

**Company Name & Address:** YARWOOD LEATHER  
UNIT B  
TREEFIELD IND. EST.  
GILDERSOME  
LEEDS  
LS27 7JU

**Contact Name:** JOHN EDWARD

### Sample Details

Reference No.: Not stated  
Order No.: PR2069  
Style No.: Not stated  
Batch No.: Not stated  
Quality: MANHATTAN  
Colour: NATURAL 15424  
Supplier: Not stated  
Intended Use: UPH  
Quoted Fibre Composition: Not stated  
Retailer: Not stated  
Buying Division: Not stated  
Sample Description: White coloured woven fabric with pile and grey coloured backing

Test Method	Pre Treatment	Flammability Performance Requirements	Result
IMO FTP Code (2010) – Annex 1, Part 8 (Smouldering cigarette test)	None	IMO FTP Code (2010) – Annex 1, Part 8	PASS
IMO FTP Code (2010) – Annex 1, Part 8 (Propane flame test)	None	IMO FTP Code (2010) – Annex 1, Part 8	PASS

.....  
**STEVEN OWEN**  
(Technical & Operational Excellence Manager)

.....  
  
**ANDREW HALLETT**  
(Flammability Team Leader)

.....  
**CAROLE SPOWART**  
(Flammability Administrator)

.....  
**GREGORY JAMES**  
(Flammability Technician)

Report No.: LEI21110732C Page 1 of 4

## FLAMMABILITY TEST REPORT

### Additional Information (Annex)

Name and Address of the Sponsor: Not stated  
Name and Address of the  
Manufacturer/Supplier (If known): Not stated  
Type of Furniture: UPH  
Fabric Details – Weave/Density/Yarn  
count/thickness(mm)/mass(g/m<sup>2</sup>) Colour &  
Tone: Not stated  
Fire Retardant Treatment: No

### Test Specification

Test Method: IMO FTP Code (2010) – Annex 1, Part 8  
Ignition Source: Ignition source 0: Filterless cigarette  
Ignition source 1: Propane Gas (95% Purity) flowing at 6.38±0.25 g/hour @  
20°C.  
Flame Application Time: 20±1 seconds  
Side Tested: Face

### Uncertainty of Measurement

The uncertainty of measurement for ignition source 0 has been estimated to be 0.03%  
The uncertainty of measurement for ignition source 1 has been estimated to be 5.43%

### Cigarette Specification

Cigarette Type: Filterless cigarette  
Dimensions: Length: 70±4 mm  
Diameter: 8±0.5 mm  
Mass: 0.95±0.15 g  
Smouldering Rate: 11±4.0 min/50mm

### Filling Specification (As requested by the customer)

Filling Type: Polyurethane Foam  
Supplier / Grade: Carpenter / RP21130 Unmodified  
Size: 450 X 300 X 75mm (back) & 450 X 150 X 75mm (seat)  
Density / Hardness: 20-22 kg/m<sup>3</sup> / Type B, 130N

### Pre-treatment / Durability procedure

None. Tested as received

### Conditioning

Prior to Testing: At least 72 hours in ambient indoor conditions, then at least 16 hours in an  
atmosphere having a temperature of 23±2°C and a relative humidity of 50±5%  
At Time of Testing: Temperature between 15°C & 25°C. Relative humidity between 20% & 70%

## FLAMMABILITY TEST REPORT

### Test Results

*"The test results relate to the behaviour of the test specimens of a product under the particular conditions of the test; they are not intended to be the sole criterion for assessing the potential fire hazard of the product in use."*

Cigarette Test	Initial		Repeat	
Criterion of Ignition				
Smoulders More Than 1 Hour	No		No	
In Final Examination, Presence of Active Smouldering	No		No	
Occurrence Of Flames	No		No	
Comments				
Flaming Ceased	-		-	
Glowing Ceased	-		-	
Smoke Ceased	< 24 Minutes		< 25 Minutes	
Extent of Damage (Burning and/or Charring)				
Damage to Back (mm) Length / Width	11	65	10	65
Damage to Base (mm) Length / Width	12	65	12	65
Result	PASS		PASS	

Propane Flame Test	Initial		Repeat	
Criterion of Ignition				
Smoulders More Than 1 Hour	No		No	
In Final Examination, Presence of Active Smouldering	No		No	
Flames For Longer Than 120 Seconds	No		No	
Comments				
Flaming Ceased	0 Seconds		0 Seconds	
Glowing Ceased	-		-	
Smoke Ceased	19 Seconds		20 Seconds	
Extent of Damage (Burning and/or Charring)				
Damage to Back (mm) Length / Width	70	20	70	20
Damage to Base (mm) Length / Width	10	13	11	14
Result	PASS		PASS	

### Conclusions

When tested over RP21130 foam (as requested by the customer) the sample meets the flammability performance requirements of the smouldering cigarette test in FTP Code (2010) – Annex 1, Part 8. **PASS.**

When tested over RP21130 foam (as requested by the customer) the sample meets the flammability performance requirements of the propane flame test in FTP Code (2010) – Annex 1, Part 8. **PASS.**



## FLAMMABILITY TEST REPORT

The client acknowledges and agrees that any services provided and/or reports produced by Intertek are done so within the limits of the scope of work agreed pursuant to the client's specific instructions. This report relates specifically to the sample(s) tested that were drawn and delivered by the client or their nominated third party. Intertek does not make any representation or warranty for any bulk samples or certify the bulk samples received from the client. Furthermore, Intertek does not provide a warranty or verification on the sample(s) representing any specific goods, material and/or shipment and only relate to the sample(s) as received and tested. Intertek have aimed to conduct the review on a diligent and careful basis and we do not accept any liability to you for any loss arising out of or in connection with this report, in contract, tort, by statute or otherwise, except in the event of our gross negligence or wilful misconduct. In no event, will the contents of any reports or any extracts, excerpts or parts of any reports be distributed or published without the prior written consent of Intertek in each instance. Only the client is authorized to permit copying or distribution of this report (and then only in its entirety). Any such third parties to whom this report may be circulated rely on the content of the report solely at their own risk.

The reported expanded uncertainty is based on a standard uncertainty multiplied by a coverage factor of  $k = 2$ , providing a level of confidence of approximately 95 %. Unless otherwise specified all compliance and pass/fail statements are binary simple acceptance based on the tolerance interval and, with the exception of graded methods, a test uncertainty ratio greater (TUR) than 4:1. For graded methods the TUR will drop to as low as 0.5:1 when the tolerance limits are within a grade division of the upper scale limit. The Uncertainty budgets are stated for each Test method, these are for reference, and should be considered when results are on or close to Specification Limits / Requirements and in such cases it should be noted that the risk of false acceptance or rejection may be as high as 50%, for further information please refer to ILAC G8.

## FLAMMABILITY TEST REPORT

**Report No.:** LEI21110734A

**Date Received:** 08/11/21

**Date Tested:** 12/11/21

**Date Issued:** 12/11/21

**Company Name & Address:**  
YARWOOD LEATHER  
UNIT B  
TREEFIELD IND. EST.  
GILDERSOME  
LEEDS  
LS27 7JU

**Contact Name:** JOHN EDWARD

### Sample Details

Reference No.: Not stated  
Order No.: PR2069  
Style No.: Not stated  
Batch No.: Not stated  
Quality: SANTORINI  
Colour: SNOW 54  
Supplier: Not stated  
Intended Use: UPH  
Quoted Fibre Composition: Not stated  
Retailer: Not stated  
Buying Division: Not stated  
Sample Description: White coloured woven fabric with grey coloured backing

Test Method	Pre Treatment	Requirement	Result
BS 5852: Part 1: 1979, Ignition source 0 (Cigarette)	None	Compliance with Schedule 4 Part 1 (The cigarette test) of The Furniture and Furnishings (fire) (safety) Regulations 1988 (as amended).	<b>Complies</b>
<b>Note:</b> Fabric was submitted for test rather than the upholstery composite so as suggested by The Guide to the Furniture Regulations the cover fabric was tested for cigarette resistance using standard polyurethane foam (non-modified) as this will give the furniture manufacturer a good indication of its likelihood to pass the cigarette test for the finished article			
BS 5852: Part 1: 1979, Ignition source 1 (Match)	None	Compliance with Schedule 5 Part 1 (The match test) of The Furniture and Furnishings (fire) (safety) Regulations 1988 (as amended).	<b>Complies</b>

.....  
**STEVEN OWEN**  
(Technical & Operational  
Excellence Manager)

  
.....  
**ANDREW HALLETT**  
(Flammability Team Leader)

.....  
**CAROLE SPOWART**  
(Flammability  
Administrator)

.....  
**GREGORY JAMES**  
(Flammability Technician)

## FLAMMABILITY TEST REPORT

### Test Specification

Test Method: BS 5852: Part 1: 1979 as modified by Schedule 4 Part 1 & Schedule 5 Part 1 of The Furniture and Furnishings (fire) (safety) Regulations 1988 (as amended).  
Ignition Source: Ignition source 0: Filterless cigarette  
Ignition source 1: Butane Gas flowing at 45ml/min @ 25°C.  
Flame Application Time: 20±1 seconds  
Side Tested: Face

### Uncertainty of Measurement

The uncertainty of measurement for Schedule 4 Part 1 source 0 has been estimated to be 0.03%  
The uncertainty of measurement for Schedule 5 Part 1 source 1 has been estimated to be 5.43%

### Filling Specification

Filling Type: Polyurethane foam  
Supplier / Grade: Carpenter / RP21130 unmodified  
Size: 450 X 300 X 75mm (back) & 450 X 150 X 75mm (seat)  
Density / Hardness: 20-22 kg/m<sup>3</sup> / Type B, 130N

### Pre-treatment / Durability Procedure

None

### Conditioning

Prior to Testing: At least 72 hours in ambient indoor conditions, then at least 16 hours in an atmosphere having a temperature of 20±5°C and a relative humidity of 50±20%  
At Time of Testing: Temperature between 15°C & 30°C. Relative humidity between 20% & 70%

### Test Results

*"The following test results relate only to the ignitability of the combinations of materials under the particular conditions of test; they are not intended as a means of assessing the full potential fire hazard of the materials in use."*

Ignition source 0 (Test 1):	The cigarette failed to burn its complete length, there was no flaming or progressive smouldering. <b>(Pass)</b>
Ignition source 0 (Test 2):	The cigarette failed to burn its complete length, there was no flaming or progressive smouldering. <b>(Pass)</b>
Ignition source 1 (Test 1):	Flaming ceased 26 seconds after the removal of the burner, there was no progressive smouldering. <b>(Pass)</b>
Ignition source 1 (Test 2):	Flaming ceased 24 seconds after the removal of the burner, there was no progressive smouldering. <b>(Pass)</b>

### Conclusions

The composite tested meets the requirements of Schedule 4 Part 1 (The cigarette test) of The Furniture and Furnishings (fire) (safety) Regulations 1988 (as amended). **PASS.**

The fabric tested meets the requirements of Schedule 5 Part 1 (The match test) of The Furniture and Furnishings (fire) (safety) Regulations 1988 (as amended). **PASS.**



## FLAMMABILITY TEST REPORT

The client acknowledges and agrees that any services provided and/or reports produced by Intertek are done so within the limits of the scope of work agreed pursuant to the client's specific instructions. This report relates specifically to the sample(s) tested that were drawn and delivered by the client or their nominated third party. Intertek does not make any representation or warranty for any bulk samples or certify the bulk samples received from the client. Furthermore, Intertek does not provide a warranty or verification on the sample(s) representing any specific goods, material and/or shipment and only relate to the sample(s) as received and tested. Intertek have aimed to conduct the review on a diligent and careful basis and we do not accept any liability to you for any loss arising out of or in connection with this report, in contract, tort, by statute or otherwise, except in the event of our gross negligence or wilful misconduct. In no event, will the contents of any reports or any extracts, excerpts or parts of any reports be distributed or published without the prior written consent of Intertek in each instance. Only the client is authorized to permit copying or distribution of this report (and then only in its entirety). Any such third parties to whom this report may be circulated rely on the content of the report solely at their own risk.

The reported expanded uncertainty is based on a standard uncertainty multiplied by a coverage factor of  $k = 2$ , providing a level of confidence of approximately 95 %. Unless otherwise specified all compliance and pass/fail statements are binary simple acceptance based on the tolerance interval and, with the exception of graded methods, a test uncertainty ratio greater (TUR) than 4:1. For graded methods the TUR will drop to as low as 0.5:1 when the tolerance limits are within a grade division of the upper scale limit. The Uncertainty budgets are stated for each Test method, these are for reference, and should be considered when results are on or close to Specification Limits / Requirements and in such cases it should be noted that the risk of false acceptance or rejection may be as high as 50%, for further information please refer to ILAC G8.

## FLAMMABILITY TEST REPORT

**Report No.:** LEI21110734B    **Date Received:** 08/11/21    **Date Tested:** 12/11/21    **Date Issued:** 12/11/21

**Company Name & Address:**  
YARWOOD LEATHER  
UNIT B  
TREEFIELD IND. EST.  
GILDERSOME  
LEEDS  
LS27 7JU

**Contact Name:** JOHN EDWARD

### Sample Details

Reference No.: Not stated  
Order No.: PR2069  
Style No.: Not stated  
Batch No.: Not stated  
Quality: SANTORINI  
Colour: SNOW 54  
Supplier: Not stated  
Intended Use: UPH  
Quoted Fibre Composition: Not stated  
Retailer: Not stated  
Buying Division: Not stated  
Sample Description: White coloured woven fabric with grey coloured backing

Test Method	Pre Treatment	Requirement	Result
BS 5852:2006 Clause 11 (upholstery composite) Ignition source 5	None	As BS 5852:2006 Clause 11 (upholstery composite) Ignition source 5	NI/5 (PASS)

.....  
**STEVEN OWEN**  
(Technical & Operational  
Excellence Manager)

  
.....  
**ANDREW HALLETT**  
(Flammability Team Leader)

.....  
**CAROLE SPOWART**  
(Flammability  
Administrator)

.....  
**GREGORY JAMES**  
(Flammability Technician)

## FLAMMABILITY TEST REPORT

### Test Specification

Test Method: BS 5852:2006 Clause 11 (upholstery composite) Ignition source 5

### Uncertainty of Measurement

The uncertainty of measurement has been estimated to be 5.99%

### Foam specification

Supplier / Grade: Carpenter / RX36110  
Size: 450 x 450 x 75mm (back) & 450 x 300 x 75mm (seat)  
Density / Hardness: 36kg/m<sup>3</sup> ± 5% / 105N ± 15%

### Conditioning

Prior to Testing: At least 72 hours in ambient indoor conditions, then at least 24 hours in an atmosphere having a temperature of 23 ± 2°C and a relative humidity of 50 ± 5%

At Time of Testing: Temperature of 10 °C to 30 °C and a relative humidity of 15 % to 80 %

### Test Results

*"The following test results relate only to the ignitability of the combination of upholstery composites (BS 5852: 2006, Clause 11) under the particular conditions of test stated; they are not intended as a means of assessing the full potential fire hazard of the materials or products in use";*

Test number / position	1	2
<b>Criterion of Ignition</b>		
<b>Smouldering Criteria</b>		
Externally detectable amounts of smoke, heat or glowing 60 minutes after crib ignition	No	No
Escalating smouldering behaviour rendered the test unsafe to continue and required forcible extinction	No	No
Smouldering essentially consumed the test specimen within the duration of the test / Smouldering reached the extremities of the test specimen (Other than the top of the vertical part of the test specimen) within the duration of the test	No	No
<b>Flaming Failure</b>		
The test specimen continued to flame for more than 10 minutes after the ignition of the crib	No	No
Escalating combustion behaviour rendered the test unsafe to continue and required forcible extinction	No	No
Flaming essentially consumed the test specimen within the duration of the test	No	No
Flaming reached the extremities of the test specimen (Other than the top of the vertical part of the test specimen) within the duration of the test	No	No
Debris from the test specimen caused an isolated floor fire that continued to flame for more than 10 minutes after the ignition of the crib	No	No
<b>Final Examination</b>		
Progressive smouldering was observed when the sample was dismantled	No	No
Evidence of charring within the filling (other than discolouration) more than 100mm in any direction, apart from upwards, from the nearest part of the original position of the ignition source	No	No
Time to extinction of flames after crib ignition	7 Minutes 29 Seconds	6 Minutes 10 Seconds
Time to extinction of glowing after crib ignition	Due to the amount of smoke in the test enclosure it was not possible to see when crib glow ceased	Due to the amount of smoke in the test enclosure it was not possible to see when crib glow ceased
Time to extinction of smoke after crib ignition	Due to the amount of smoke in the test enclosure it was not possible to see when smoking ceased	Due to the amount of smoke in the test enclosure it was not possible to see when smoking ceased
Maximum extent of damage to back (mm) Length / Width	400 245	400 220
Maximum extent of damage to base (mm) Length / Width	103 205	105 190
<b>Test Result</b>	<b>NI/5 (PASS)</b>	<b>NI/5 (PASS)</b>
<b>Ignitability performance index: "Clause 11 - NI/5"</b>		



## FLAMMABILITY TEST REPORT

The client acknowledges and agrees that any services provided and/or reports produced by Intertek are done so within the limits of the scope of work agreed pursuant to the client's specific instructions. This report relates specifically to the sample(s) tested that were drawn and delivered by the client or their nominated third party. Intertek does not make any representation or warranty for any bulk samples or certify the bulk samples received from the client. Furthermore, Intertek does not provide a warranty or verification on the sample(s) representing any specific goods, material and/or shipment and only relate to the sample(s) as received and tested. Intertek have aimed to conduct the review on a diligent and careful basis and we do not accept any liability to you for any loss arising out of or in connection with this report, in contract, tort, by statute or otherwise, except in the event of our gross negligence or wilful misconduct. In no event, will the contents of any reports or any extracts, excerpts or parts of any reports be distributed or published without the prior written consent of Intertek in each instance. Only the client is authorized to permit copying or distribution of this report (and then only in its entirety). Any such third parties to whom this report may be circulated rely on the content of the report solely at their own risk.

The reported expanded uncertainty is based on a standard uncertainty multiplied by a coverage factor of  $k = 2$ , providing a level of confidence of approximately 95 %. Unless otherwise specified all compliance and pass/fail statements are binary simple acceptance based on the tolerance interval and, with the exception of graded methods, a test uncertainty ratio greater (TUR) than 4:1. For graded methods the TUR will drop to as low as 0.5:1 when the tolerance limits are within a grade division of the upper scale limit. The Uncertainty budgets are stated for each Test method, these are for reference, and should be considered when results are on or close to Specification Limits / Requirements and in such cases it should be noted that the risk of false acceptance or rejection may be as high as 50%, for further information please refer to ILAC G8.

## FLAMMABILITY TEST REPORT

**Report No.:** LEI21110734C    **Date Received:** 08/11/21    **Date Tested:** 12/11/21    **Date Issued:** 12/11/21

**Company Name & Address:** YARWOOD LEATHER  
UNIT B  
TREEFIELD IND. EST.  
GILDERSOME  
LEEDS  
LS27 7JU

**Contact Name:** JOHN EDWARD

### Sample Details

Reference No.:	Not stated
Order No.:	PR2069
Style No.:	Not stated
Batch No.:	Not stated
Quality:	SANTORINI
Colour:	SNOW 54
Supplier:	Not stated
Intended Use:	UPH
Quoted Fibre Composition:	Not stated
Retailer:	Not stated
Buying Division:	Not stated
Sample Description:	White coloured woven fabric with grey coloured backing

Test Method	Pre Treatment	Flammability Performance Requirements	Result
IMO FTP Code (2010) – Annex 1, Part 8 (Smouldering cigarette test)	None	IMO FTP Code (2010) – Annex 1, Part 8	PASS
IMO FTP Code (2010) – Annex 1, Part 8 (Propane flame test)	None	IMO FTP Code (2010) – Annex 1, Part 8	PASS

.....  
**STEVEN OWEN**  
(Technical & Operational  
Excellence Manager)

  
.....  
**ANDREW HALLETT**  
(Flammability Team Leader)

.....  
**CAROLE SPOWART**  
(Flammability  
Administrator)

.....  
**GREGORY JAMES**  
(Flammability Technician)

## FLAMMABILITY TEST REPORT

### Additional Information (Annex)

Name and Address of the Sponsor: Not stated  
Name and Address of the  
Manufacturer/Supplier (If known): Not stated  
Type of Furniture: UPH  
Fabric Details – Weave/Density/Yarn  
count/thickness(mm)/mass(g/m<sup>2</sup>) Colour &  
Tone: Not stated  
Fire Retardant Treatment: No

### Test Specification

Test Method: IMO FTP Code (2010) – Annex 1, Part 8  
Ignition Source: Ignition source 0: Filterless cigarette  
Ignition source 1: Propane Gas (95% Purity) flowing at 6.38±0.25 g/hour @  
20°C.  
Flame Application Time: 20±1 seconds  
Side Tested: Face

### Uncertainty of Measurement

The uncertainty of measurement for ignition source 0 has been estimated to be 0.03%  
The uncertainty of measurement for ignition source 1 has been estimated to be 5.43%

### Cigarette Specification

Cigarette Type: Filterless cigarette  
Dimensions: Length: 70±4 mm  
Diameter: 8±0.5 mm  
Mass: 0.95±0.15 g  
Smouldering Rate: 11±4.0 min/50mm

### Filling Specification (As requested by the customer)

Filling Type: Polyurethane Foam  
Supplier / Grade: Carpenter / RP21130 Unmodified  
Size: 450 X 300 X 75mm (back) & 450 X 150 X 75mm (seat)  
Density / Hardness: 20-22 kg/m<sup>3</sup> / Type B, 130N

### Pre-treatment / Durability procedure

None. Tested as received

### Conditioning

Prior to Testing: At least 72 hours in ambient indoor conditions, then at least 16 hours in an  
atmosphere having a temperature of 23±2°C and a relative humidity of 50±5%  
At Time of Testing: Temperature between 15°C & 25°C. Relative humidity between 20% & 70%



## FLAMMABILITY TEST REPORT

### Test Results

*"The test results relate to the behaviour of the test specimens of a product under the particular conditions of the test; they are not intended to be the sole criterion for assessing the potential fire hazard of the product in use."*

Cigarette Test	Initial		Repeat	
Criterion of Ignition				
Smoulders More Than 1 Hour	No		No	
In Final Examination, Presence of Active Smouldering	No		No	
Occurrence Of Flames	No		No	
Comments				
Flaming Ceased	-		-	
Glowing Ceased	-		-	
Smoke Ceased	The cigarette failed to burn its complete length, there was no flaming or progressive smouldering		The cigarette failed to burn its complete length, there was no flaming or progressive smouldering	
Extent of Damage (Burning and/or Charring)				
Damage to Back (mm) Length / Width	-	-	-	-
Damage to Base (mm) Length / Width	-	-	-	-
Result	PASS		PASS	

Propane Flame Test	Initial		Repeat	
Criterion of Ignition				
Smoulders More Than 1 Hour	No		No	
In Final Examination, Presence of Active Smouldering	No		No	
Flames For Longer Than 120 Seconds	No		No	
Comments				
Flaming Ceased	22 Seconds		24 Seconds	
Glowing Ceased	-		-	
Smoke Ceased	48 Seconds		54 Seconds	
Extent of Damage (Burning and/or Charring)				
Damage to Back (mm) Length / Width	90	20	90	25
Damage to Base (mm) Length / Width	10	10	10	10
Result	PASS		PASS	

### Conclusions

When tested over RP21130 foam (as requested by the customer) the sample meets the flammability performance requirements of the smouldering cigarette test in FTP Code (2010) – Annex 1, Part 8. **PASS.**

When tested over RP21130 foam (as requested by the customer) the sample meets the flammability performance requirements of the propane flame test in FTP Code (2010) – Annex 1, Part 8. **PASS.**

## FLAMMABILITY TEST REPORT

The client acknowledges and agrees that any services provided and/or reports produced by Intertek are done so within the limits of the scope of work agreed pursuant to the client's specific instructions. This report relates specifically to the sample(s) tested that were drawn and delivered by the client or their nominated third party. Intertek does not make any representation or warranty for any bulk samples or certify the bulk samples received from the client. Furthermore, Intertek does not provide a warranty or verification on the sample(s) representing any specific goods, material and/or shipment and only relate to the sample(s) as received and tested. Intertek have aimed to conduct the review on a diligent and careful basis and we do not accept any liability to you for any loss arising out of or in connection with this report, in contract, tort, by statute or otherwise, except in the event of our gross negligence or wilful misconduct. In no event, will the contents of any reports or any extracts, excerpts or parts of any reports be distributed or published without the prior written consent of Intertek in each instance. Only the client is authorized to permit copying or distribution of this report (and then only in its entirety). Any such third parties to whom this report may be circulated rely on the content of the report solely at their own risk.

The reported expanded uncertainty is based on a standard uncertainty multiplied by a coverage factor of  $k = 2$ , providing a level of confidence of approximately 95 %. Unless otherwise specified all compliance and pass/fail statements are binary simple acceptance based on the tolerance interval and, with the exception of graded methods, a test uncertainty ratio greater (TUR) than 4:1. For graded methods the TUR will drop to as low as 0.5:1 when the tolerance limits are within a grade division of the upper scale limit. The Uncertainty budgets are stated for each Test method, these are for reference, and should be considered when results are on or close to Specification Limits / Requirements and in such cases it should be noted that the risk of false acceptance or rejection may be as high as 50%, for further information please refer to ILAC G8.

## Ordering Fabric

You can order fabric in several ways:

By phone: +44 (0) 113 252 1014 and speak to our sales team.

By email: [sales@yarwoodleather.com](mailto:sales@yarwoodleather.com)

Minimum Order Quantity - ten linear metre

Fabric items are subject to a lead time dependent on order requirements.

Please get in touch with our team for details.

Please remember that all samples should be treated as a guide for colour and texture only. There may be some minor variation between sample and final batch. If an exact match is required, please ask for a stock cutting.

## Yarwood Services

Contract Cutting

Cutting and Sewing

Embroidery

Leather Debossing

Leather and Faux Leather Bespoke Colour Production

## Get in touch

Treefield Industrial Estate	t: +44 (0) 113 252 1014
Gelderd Road	f: +44 (0) 113 252 7391
Morley, Leeds	e: <a href="mailto:sales@yarwoodleather.com">sales@yarwoodleather.com</a>
LS27 7JU	w: <a href="http://www.yarwoodleather.com">www.yarwoodleather.com</a>
UK	s: <a href="https://www.instagram.com/yarwoodleather">@yarwoodleather</a>